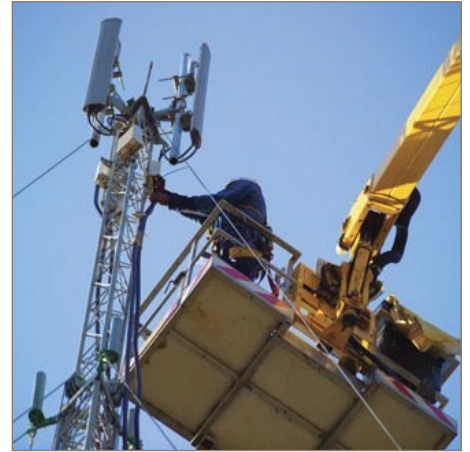


Electrical non-conductive Hoses



Whenever a system needs to be electrical non-conductive, Parker offers the right hose solution for all media transfer.

Product features:

- Defined non-conductivity acc. SAE J517 100 R7/R8
- Non pinpricked cover preventing moisture ingress
- Orange cover for easy identification
- Comprehensive hose range covering all requirements
- Light weight & high flexibility for easy handling and installation
- Abrasion resistant cover for long service life



Contact information:

www.parker.com/polyflex

Market / Application examples:

Aluminum industry

- pneumatic lines for crust breakers or other pneumatic equipment
- hydraulic lines for cranes & other equipment

Mobile vehicles

- hydraulic lines for works at high voltage lines

Power generation

- cooling lines for power converter
- air operated switches
- cooling lines in switch cabinets

Wind turbines

- lightning protection system
- converter cooling

Steel plants / foundries

- hydraulic systems such as electrical converter



ENGINEERING YOUR SUCCESS.



Non-conductive Hose Types:

Hose for...

cooling systems with de-ionised water; pneumatic systems

838M – Push Lok® Hose



Dimensions	DN6 up to DN20
Working Pressures	1.6 MPa
Temperature Range	-40 °C up to +80 °C
Fitting Series	82 Push in fittings

Hose for...

medium pressure air and hydraulic systems, such as mobile vehicles and air lines in aluminium plants.

518C – SAE 100 R7 Hose - crimp type fittings



Dimensions	DN3 up to DN25
Working Pressures	up to 22.5 MPa
Temperature Range	-40 °C up to +100 °C
Fitting Series	56

Hose for...

high pressure hydraulic systems, such as cranes and power converters in aluminium & metal plants or mobile vehicles.

528N/588N – SAE 100 R8 Hose

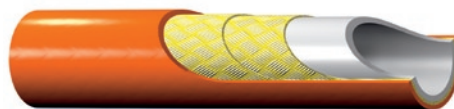


Dimensions	DN5 up to DN25
Working Pressures	up to 34.5 MPa
Temperature Range	-40 °C up to +100 °C
Fitting Series	56

Hose for...

ultra high pressure hydraulic applications.

2022N – 350 & 700 bar Hose



Dimensions	DN6 up to DN12
Working Pressures	up to 70 MPa
Temperature Range	-40 °C up to +55 °C
Fitting Series	55, 8X, 3X, LX

- For applications with high impulse requirements please use hose types 518C, 528 or 588N with crimp type fittings.
- Further product details can be found in catalogue 4460 (838M, 518C, 528N/588N) and 4462 (2022N).

